



Université
Catholique
de Lille 1875

Take action on
behalf of the world,
**light the way to
the future!**

www.univ-catholille.fr





Université
Catholique
de Lille 1875

Université Catholique de Lille

The strength of ideals

Founded in 1875, the *Université Catholique de Lille* is a multi-disciplinary institution that brings together 5 Faculties, 17 Schools, *Grandes Écoles* in business and engineering, and health and social care establishments. As France's largest private not-for-profit university, it is founded on the human and Christian values that inspired its origins.

OUR VISION : The integral development of the individual through academic excellence in the service of the common good and the transformation of the world.

OUR MISSION : Training, Research, Service to society.

OUR PROMISE : To place the individual at the center of our concerns.

OUR VALUES : Humanism, Ethics, Optimism, Openness.

KEY FIGURES

42,000 students including **8,800+** international

354 degree programs

22 training institutions

A **hospital group** and health and social care establishments (nearly **2,000** beds and places in total)

15 research units

587 partner universities on 5 continents

150

ans

1875

2025

Université
Catholique
de Lille 1875



150

ans

1875

2025

Université
Catholique
de Lille 1875



Lille, a vibrant city at the heart of Europe



With a rich and complex history shaped by various European influences, Lille has grown into a vibrant, modern city known for its creativity, innovation, and quality of life. Today, it is part of a dynamic cross-border metropolitan area of over 2 million people, yet retains a welcoming, **human-scale atmosphere** with under 250,000 residents - nearly half of whom are under 30.

Lille is a **true student city**, easily explored on foot or by bike, and supported by an efficient public transport system including metro, trams, and frequent trains that connect it seamlessly to Paris, Brussels, London, and many other European destinations.

Designated **European Capital of Culture in 2004** and **World Design Capital in 2020**, Lille offers year-round cultural experiences: museums, opera, theatres, concerts, and major festivals such as Series Mania and the Lille Piano(s) Festival.

The region is also home to several world-class museums including the **Palais des Beaux-Arts**, **Louvre-Lens**, and **La Piscine in Roubaix**. Most cultural venues offer free or discounted access for students, making Lille an ideal destination for living, learning, and exploring at the heart of Europe.



Rich history & heritage



Founded in 1875, the Université Catholique de Lille has developed a historic campus at the heart of Lille, and is home to emblematic neo-Gothic buildings, including its Hôtel Académique and University Chapel. This architectural heritage highlights its **traditional values of knowledge and spirituality** which are at the heart of its identity.

Upon its official opening in January 1877, the university comprised three faculties: Law, Arts, and Science, soon followed by a Faculty of Medicine and a Faculty of Theology. The first constructions took place in three phases (1879 to 1887, 1886 to 1913, and 1918 to 1927), notably including the university chapel and the first medical facilities. Since then, the University has never stopped developing and diversifying and has now reached **a total of 22 training institutions, 9 health and social care establishments** and welcomes more than 40,000 students on its campuses every year.



The Vauban campus also features an astronomical observatory dating back to 1888, renovated and reopened in 2025, and a botanical garden managed by the Faculty of Medicine - all of which reflect the university's **longstanding commitment to science and public service**.



Academic offer

From undergraduate to doctoral levels, our institutions offer 350+ degree programs in the following areas:

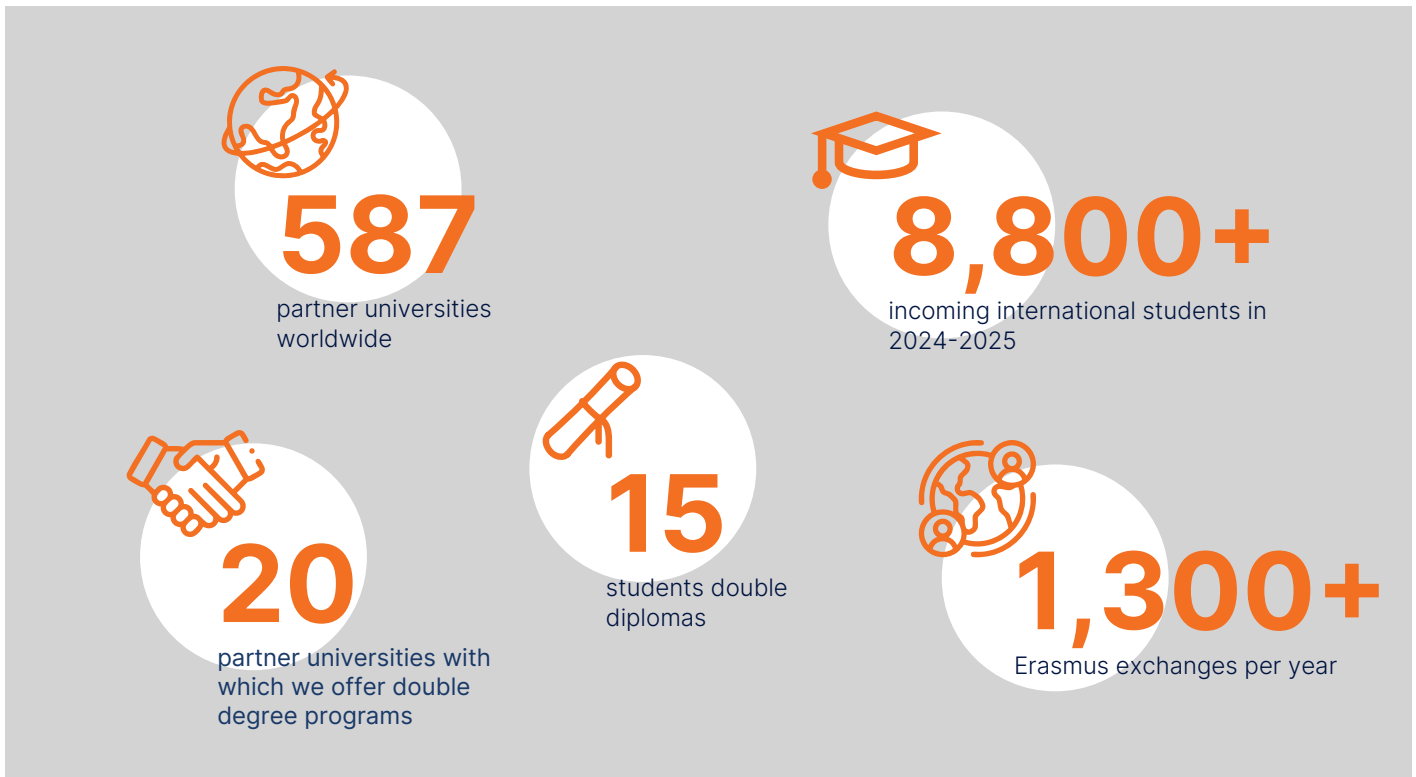
	Faculty of Law (FLD)	ESPOL School of Political Science	Faculty of Management, Economics & Sciences (FGES + EDN, ISEA)	EDHEC Business School	ESPAS School of Business & Biosciences	ESTICE School of Management	IESEG School of Management	Faculty of Art & Humanities (FLSH)	IJTM School of Journalism	ISTC School of Communication	Faculty of Medicine, Midwifery & Health Sciences (FMMS)	IKPO Institute of Physiotherapy, Podology, & Orthopaedics	ICAM School of Engineering	JUNIA School of Engineering	ESSLIL School of Social Sciences	IFP Teacher Training Institute	Faculty of Theology (FT)	LIDD Design School	PIKTURA Art & Design School	USCHOOL
Law	✓			✓																
Political Science	✓	✓																		
International Relations	✓	✓						✓												
Languages						✓	✓	✓												
Humanities						✓	✓	✓		✓					✓					
Marketing, communication & journalism			✓				✓	✓	✓	✓										
Economics & Accounting			✓	✓	✓		✓													
Business & Management	✓		✓	✓		✓	✓	✓		✓										
Social Care															✓					
Psychology							✓													
Health & Medicine											✓	✓								
Science and Technology			✓		✓									✓						
Engineering													✓	✓						
Digital Science			✓											✓						
Design & Visual Arts																		✓	✓	
Pedagogy							✓									✓				
Theology																	✓			

Multi-disciplinary courses



In addition to a wide array of programs in French, **many programs are available in English** and include international opportunities.

International opportunities



A STRONG COMMITMENT TO ERASMUS+

Amongst the top 3 universities in France in terms of Erasmus mobilities, the *Université Catholique de Lille* is deeply committed to the **Erasmus+ programme**, which plays a center role of its international policy. Each year, hundreds of students and staff participate in **mobility opportunities** across Europe for study, internships, teaching, and training, which are supported by over **440 active Erasmus+ partnerships**.

The university also engages in **strategic partnerships and blended intensive programs (BIPs)** that foster innovation in teaching and intercultural dialogue.

Its commitment to Erasmus+ reflects a broader vision: to cultivate a **globally minded academic community**, promote **inclusion and sustainability**, and empower students to become **active European citizens**.



TWO TRIPLE-CROWN BUSINESS SCHOOLS

IÉSEG School of Management and EDHEC Business School, both part of the University, are internationally recognized higher education institutions holding the prestigious **"triple crown" of accreditations: EQUIS, AACSB, and AMBA**. This distinction, held by less than 1% of business schools worldwide, reflects their **academic excellence, global outlook, and commitment to continuous improvement** in teaching, research, and student experience.

CUSTOMIZED SHORT TERM PROGRAMS

LILLE – “Learn In Lille, Live Europe” – combines a variety of innovative, student-centred academic programs at the Université Catholique de Lille, tailored to suit different academic needs and schedules, and to provide a welcoming environment and an excellent study/life balance.

The LILLE Programs currently offer 3 different programs:

- LILLE European Summer Program
- LILLE Winter Program
- LILLE Semester Immersion Programs.

These programs provide intercultural courses with durations ranging from 2 weeks to several months, taught in English or French in small international classes that encourage exchange and collaboration. They include cultural field trips, accommodation, activities, 24/7 support, and are led by dedicated international faculty and staff.



AN ACTOR IN SEVERAL NETWORKS

The *Université Catholique de Lille* is part of both major **local and global academic networks**, promoting collaborative research and student mobility, which aims to strengthen its academic partnerships and research collaborations around the world to offer students and staff enriching opportunities for exchange and cooperation.



Lighting the way to the future

A EUROPEAN ACTOR

The University's strong commitment to the European project is deeply rooted in its mission and reflected in its active participation in major European initiatives. Through Erasmus+ (KA1 and KA2) and other key programmes such as Interreg, Horizon 2020 and LIFE, the University strengthens the quality of its teaching and research while fostering mobility, innovation, and collaboration across borders. With a network of **440 partners throughout Europe**, it offers students unique opportunities to engage in international exchanges, community-based projects, and solidarity-driven experiences that embody the spirit of Erasmus. This European dimension confirms the University's role as a truly international and socially responsible institution.

COMMITMENT TO SUSTAINABLE DEVELOPMENT

The *Université Catholique de Lille* is strongly committed to sustainable development and the socio-ecological transition, working with local, national, and international partners to drive meaningful change. As a **national demonstrator of ecological transition** in partnership with ADEME, the University has transformed its campus into a living laboratory, collecting energy data from buildings, promoting eco-friendly renovations (rainwater recovery, solar panels, sustainable materials), and hosting its first University Climate Convention. It has also signed the Grenoble Agreement in 2022, launched a MOOC on sustainability, raised awareness among all campus users, and taken measures to reduce travel impact. Student-led initiatives, such as second-hand markets, are also encouraged, reflecting a community-wide commitment to building a more sustainable future.





ENGAGEMENT AND WHOLE-PERSON EDUCATION

The University is also fully engaged in a whole-person education, including solidarity to those in needs and service learning for our students.

Service learning is at the heart of the University's educational experience, linking academic knowledge with meaningful community engagement. Through projects carried out with local, national, and international partners, students apply what they learn in the classroom to real-world challenges while developing a sense of responsibility and solidarity. Whether through social, environmental, or cultural initiatives, it encourages students to grow as professionals and as citizens, combining intellectual development with human and ethical values.

The **Bus du Droit**, a flagship project of the Faculty of Law, is a concrete example of this commitment. By bringing free legal information and guidance directly to local communities, law students - under the supervision of professors and legal professionals - gain valuable practical experience while promoting access to justice and civic responsibility.

The **Humanities Program** is also an example of interdisciplinary program that brings together literature, philosophy, history, arts, and social sciences to help students better understand cultures, ideas, and the world we live in. Through different modules, this program sharpens critical thinking, nurtures creativity, and encourages open dialogue - skills that are valuable not only for academic success but also for thriving in a wide range of careers and life experiences.

Research

850

teachers-researchers, university
hospital researchers

220

PhD students

12

research units and institutes
(including 2 with the CNRS)

15

installed research chairs

17

platforms and resources for research

Research at *Université Catholique de Lille* is built around 4 interdisciplinary themes that confront today's global challenges, placing the human experience at the forefront:

- **Ethics and Integral Ecology:** exploring ethical issues arising from technological and environmental challenges across all dimensions of ecology – human, social, political, and economic.
- **Vulnerabilities and Fragilities:** studying human dignity through themes such as aging, end-of-life and beginning-of-life issues, dependency, childhood, illness, disability, discrimination, abuse, and more.
- **Risks and Geopolitics:** examining emerging risks, particularly geopolitical ones, and the development of associated regulatory frameworks.
- **Contemporary Social Transformations:** addressing societal shifts driven by algorithmic processes, including impacts on state security, privacy, education, marketing, entertainment, solidarity, care and spirituality.

These themes highlight the institute's commitment to **multidisciplinary research** informed by ethical, societal and future-oriented perspectives.



Student life and campus services

Student life and community life are central to the university experience. Our campuses are much more than places of academic learning; they are **dynamic, inclusive spaces where students can thrive, connect and grow together**. With a multitude of associations every student has the opportunity **to get involved and contribute to the university community**.

While combining architectural heritage, green spaces and modern facilities, the University offers a wide range of **student services at the heart of its campuses**:

2 000

rooms in 20+ student dorms on and around the campuses

7

university restaurants & sandwich shops

1

University Multi-Service Health Center offering a large variety of health appointments for prevention, treatment and general well-being.

1

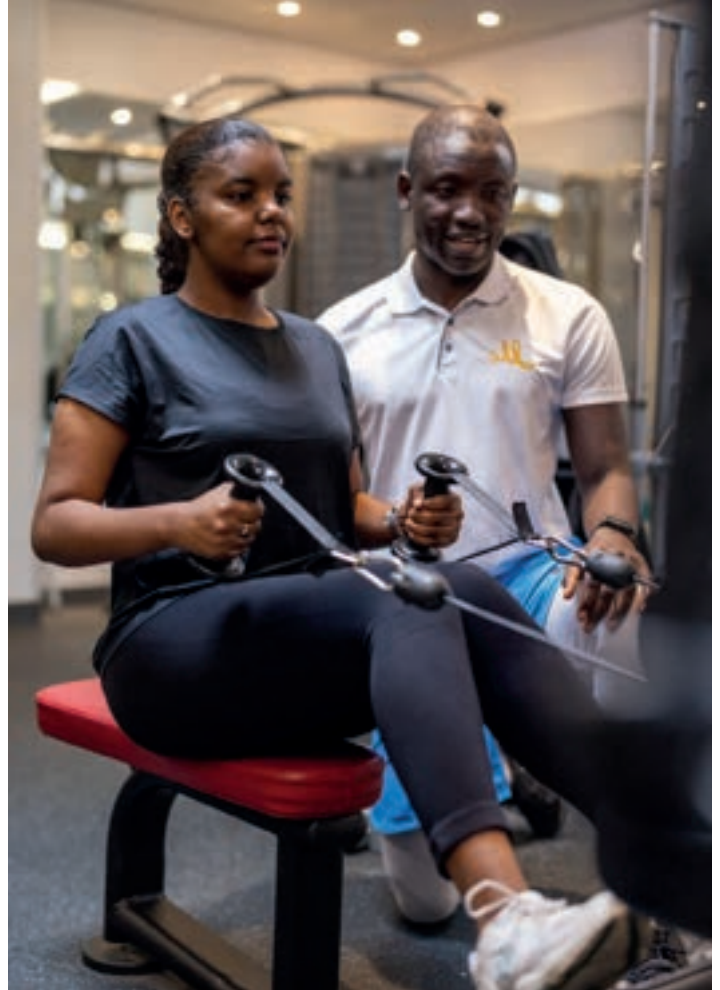
fitness club on campus and several sport activities and clubs

500+

student associations

1

third place dedicated to arts and creative projects



Univers
Catholique
de Lille



Université
Catholique
de Lille 1875

150

ans

1875

2025

Université
Catholique
de Lille 1875



International Relations Office

60 boulevard Vauban

CS 40109 - 59016 Lille Cedex - France

Tel. +33 (0)3 59 30 25 39

international@univ-catholille.fr

www.univ-catholille.fr/en



INSTITUT CATHOLIQUE DE LILLE (ICL), ASSOCIATION 1875 RECONNUE D'UTILITE PUBLIQUE
ET ETABLISSEMENT D'ENSEIGNEMENT SUPERIEUR PRIVE D'INTERET GENERAL (EESPIG)
60 BOULEVARD VAUBAN • CS 40109 • 59016 LILLE CEDEX • FRANCE • SIRET 775 624 240 000 13 • CODE APE 8542 Z
N° TVA Intracommunautaire FR 66 775 624 240 • Organisme de formation, enregistré sous le n°31 59 00468 59
Cet enregistrement ne vaut pas agrément de l'état.