



Université
Catholique
de Lille 1875

LIVE TREE
PROGRAMME DE TRANSITION
SOCIO-ÉCOLOGIQUE

Thinking about the living



TIMELINE

2014 — **Launching LIVE TREE**
A LIVE TREE Act I roadmap is drawn up in connection with the Third Industrial Revolution as championed by the Region.



Early milestones — **2018**
The Rizomm building is renovated to become a flagship demonstrator of the energy transition.

2021 — **LIVE TREE IN MOTION**
Lille Low Carbon Pact. A dozen “virtuous” real estate projects are launched.

2022 — **New commitments**
Commitment to the Grenoble Accord by all constituent parts of the *Université Catholique de Lille*, and organisation of the University Convention for the Climate.

2024 — **The beginning of a new era**
The “EuraClimat – Excellence” label is awarded; organisation of the Scientific Colloquium “Between Preservation and Transformation, Reinventing our World.”

LIVE TREE Act II — **2025**
Drafting of the LIVE TREE Act II roadmap: Thinking about the living.



Benoît Robyns,
vice-president for socio-ecological transition

As of 2013, the Université Catholique de Lille made the resolute commitment to engage in the Third Industrial Revolution (known as rev3 in the Hauts-de-France region), and thus contribute to the vital ecological, economic, social, and energy transition of both the University and the Hauts-de-France region. Through the LIVE TREE socio-ecological transition program, the University aims to engage its students as they embark on their adult and professional lives, helping them to take relevant action and build new models for society – more just and equitable, more respectful of the environment and human beings alike. The LIVE TREE program evolves constantly. Ten years of experience have led to a need for a shift in approach. We need now to put living beings at the heart of our work, and to make that work more inclusive in every way, taking into account the most vulnerable among us, making the means of transition accessible to everyone, and giving greater consideration to the cultures and challenges of countries in the Global South, which are most affected by climate change despite having contributed the least to it.

The goal is thus to preserve and regenerate biodiversity and to draw inspiration from life, which has demonstrated its resilience for billions of years!

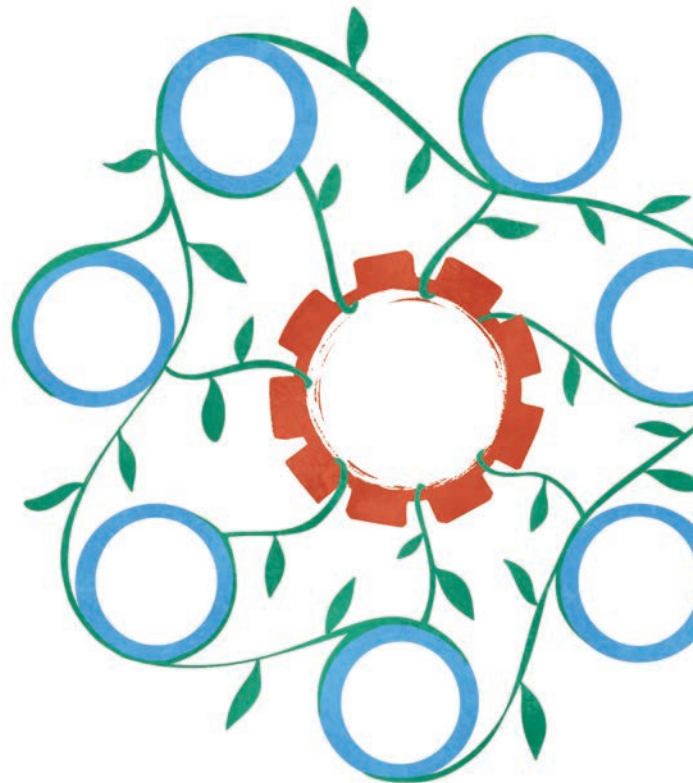
LIVE TREE

The *Université Catholique de Lille*'s socio-ecological transition program

Inspired by integral ecology and guided by the principles of strong sustainability, the LIVE TREE program promotes a systemic approach to transition involving students, staff, partners, and local stakeholders.

For over ten years, the University has advanced its roles in global education and social responsibility, structuring projects around mobility, energy, biodiversity, and more.

The University pursues a clear ambition: to build together a resilient institution, aligned with planetary limits, committed to social justice, and able to make the transition inspiring, desirable, and positively impactful for the planet, society, and all living things.



Act II - Thinking about the living

Having focused heavily on green technologies and carbon reduction through its first decade, LIVE TREE is now undergoing a major shift.

The observation: technological solutions alone are not enough, and can themselves have negative impacts (mining, water consumption, soil degradation, biodiversity collapse).

The new approach integrates living systems, frugality, and strong local partnerships, responding to “both the cry of the earth and the cry of the poor” (Pope Francis, *Laudato Si'*, 2015).

STRATEGIC PRIORITIES

In order to achieve our ambitions, and engage our students, institutions, and partners in the process, the University has structured the LIVE TREE program around three complementary challenges for the 2025-2030 term: **training, experimentation, and transformation.**

Pedagogy of transition

Research and solution demonstrators

Zero carbon trajectory and Ecosystem Resilience



Pedagogy of transition

Training active participants

LIVE TREE supports the transformation of educational programs in order to better integrate an understanding of strong sustainability and its challenges.

► **The objective: pedagogy that fosters the collective development of skills in relation to a systemic understanding of transitions.**

Within a university comprised of some two dozen schools and faculties, LIVE TREE serves as a **space for interdisciplinary dialogue**, supporting:



- the integration of ecological and social issues in education
- dissemination of innovative teaching methods (design fiction, active learning, playful and immersive approaches, and so on)
- co-creation of cross-disciplinary modules and learning pathways.

IN PRACTICE

GAMIFIED LEARNING: ODDYSSÉE

The ODDyssée learning platform, co-produced by University experts, has already enabled more than **8 400 students and 380 staff members** over the past four years to learn about the challenges of the socio-economic transition. Data from 2025



ENVIRONMENTAL HUMANITIES

This module, offered to all students alongside their degree programme, is designed to deepen understanding of ecological challenges by combining theoretical input with ethical reflection. It may also be included as part of the *Humanités* university diploma.



Research and solution demonstrators

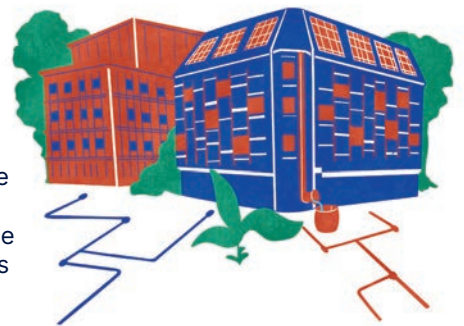
Testing, connection, and transformation in the field

In line with the rev3 dynamic, LIVE TREE supports applied research and solution demonstrators to make the University a true living laboratory for socio-ecological transition.

► **The objective: to maximise the social and environmental impact of research.**

Through its transdisciplinary approach, LIVE TREE encourages:

- real-world projects and experimentation on campus (sustainable mobility, energy, urban agriculture...)
- inclusion of students, staff, and partners in these collaborative projects
- knowledge capture and experience sharing to inspire other institutions and regions.



Finally, the long-term goal is to transform the University from a collection of isolated demonstrators into a **systemic demonstration model for transition**.

IN PRACTICE

THE INCLUNIV PROJECT (ADEME, 2023–2025)

INCLUNIV examines the ways in which “smart” or renovated HQE (High Environmental Quality) university buildings can promote user engagement with energy and environmental issues.

Through its participatory approach, the project explores the roles of students and staff in technical choices and campus use.

CHAIR IN INTEGRAL ECOLOGY

The Chair in Integral Ecology, established in 2026 and jointly supported by LIVE TREE and the Faculties of Theology and Humanities, examines ecological transition from an interdisciplinary perspective. It brings together researchers, students, businesses, and other local stakeholders, linking research, teaching, and field experiments in three key areas: governance and social justice, biodiversity and human/non-human relationships, and spirituality and philosophy.

Zero carbon trajectory and Ecosystem Resilience

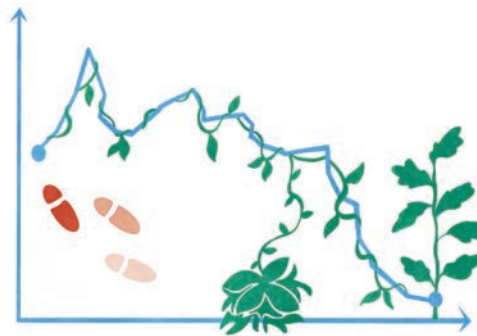
Measure, reduce, regenerate

Since 2022, the University has been conducting carbon footprint assessments of its constituent institutions in higher education and healthcare, as well as student services such as housing and catering – an important benchmark for measuring concrete institutional impact reduction. Today it aims to reduce its overall ecological footprint and strengthen its resilience.

► **The objective: to decrease the University's impact in relation to carbon, water, and biodiversity, while contributing to ecosystem regeneration.**

The program consolidates and expands action in three areas:

- reducing greenhouse gas emissions and energy consumption
- limiting resource use (water, materials ...) and promoting greater efficiency
- preserving and regenerating biodiversity on and around campus.



IN PRACTICE

CARBON AND ENVIRONMENTAL TRAJECTORIES (CTCE)

As of September 2024, the Carbon Trajectory Committee became the Carbon and Environmental Trajectories Committee, monitoring the emissions and consumption of the University's various institutions, enabling management of the environmental strategy and achievement of the 2030 targets and **carbon neutrality by 2050**.

NATURE ON CAMPUS

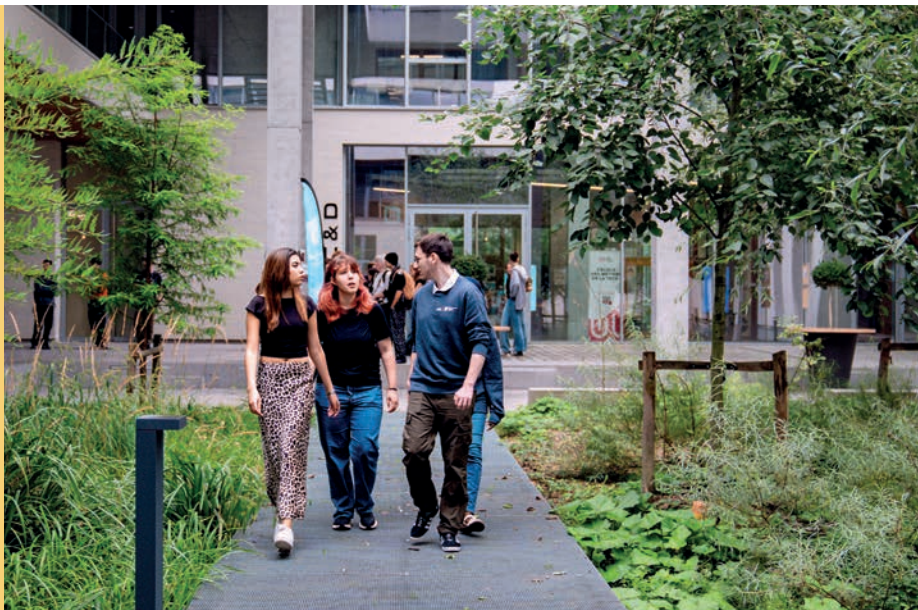
Creation of biodiversity zones, beehives, educational gardens, and ecological corridors integrated into both educational projects and campus living spaces.

-10%
Greenhouse gas emissions per user (2019–2023)*

*Scope of UCLille's higher education and research activities

“ *It is not enough to balance, in the medium term, the protection of nature with financial gain, or the preservation of the environment with progress. Halfway measures simply delay the inevitable disaster. Put simply, it is a matter of redefining our notion of progress.* ”

Pope Francis, *Laudato Si'* (2015).





Transition cannot be decreed; it must be built, constructed through partnerships, fueled by dialogue with the larger community, and strengthened through the mobilisation of us all.

Together, let us make the University the means of decisive transformation, forward-looking and committed to international environmental cooperation – a University not only capable of experimentation but also able to **demonstrate the possibility of inclusive, integrated, global transformation.**

A shared transition

These initiatives are developed and strengthened through our commitments and partnerships, such as the **Lille Low Carbon Pact with the city of Lille, framework agreements with ADEME (the French Agency for Ecological Transition) and the MEL (Lille European Metropolis), the University's integration into the PCAET (Local Climate/Air/Energy Plan), and acquisition of the «Euraclimat – Excellence» label,** ensuring coherence, credibility, and visibility for our activities, while consolidating our local presence and networking with stakeholders committed to the socio-ecological transition.

COMMITMENTS & PARTNERSHIPS



LOOKING AHEAD

2026-2027, The Intelligence of Living Things

Following Patrick Scauftaire's initiative in dedicating the year to intelligences, LIVE TREE will highlight the **intelligence of living things** – an adaptive, relational, and robust intelligence – showing how living organisms organise themselves, learn, and evolve, and offering an inspirational model for our actions and collaborations in the socio-ecological transition.

Find all the latest news and the LIVE TREE calendar at www.univ-catholille.fr



**Université
Catholique
de Lille** 1875

Université Catholique de Lille

60 boulevard Vauban
CS 40109 - 59016 Lille cedex
Tél : 03 20 13 40 00
livetree@univ-catholille.fr

www.univ-catholille.fr



FÉDÉRATION UNIVERSITAIRE ET PLURIDISCIPLINAIRE DE LILLE (FUPL), 1875, ASSOCIATION LOI 1901
ÉTABLISSEMENTS D'ENSEIGNEMENT SUPÉRIEUR PRIVÉ D'INTÉRÊT GÉNÉRAL (EESPIG)
ENSEMBLE D'ÉTABLISSEMENTS DE SANTÉ PRIVÉ D'INTÉRÊT COLLECTIF (ESPIC)
60 BOULEVARD VAUBAN • CS 40109 • 59016 LILLE CEDEX • FRANCE SIRET 325 974 269 000 12
CODE APE 8542Z • N° TVA INTRACOMMUNAUTAIRE : FR 53325974269

With the support of



**FONDATION
de la Catho de Lille**