



**Université  
Catholique  
de Lille** 1875

---

**Light the way to  
the future!**

---

[www.univ-catholille.fr](http://www.univ-catholille.fr)



# Contents

---

- 04** *Université Catholique de Lille*
- 06** Rich history and heritage
- 07** Lille, a vibrant city at the heart of Europe
- 08** Academic offer
- 10** International engagement in action
- 13** Committed to society and the common good
- 16** Research addressing global challenges
- 18** An inspiring campus environment





Université  
Catholique  
de Lille 1875

# Université Catholique de Lille

## A humanist university at the heart of Europe

Founded in 1875, the *Université Catholique de Lille* is **one of the largest private non-profit universities in France**. Located in the dynamic European metropolis of Lille - **at the crossroads of Paris, Brussels and London** - the University brings together a vibrant academic community of 43,000 students.

Rooted in the Christian humanist tradition, the University places **the development of the whole person at the centre of its educational mission**. Inspired by values of human dignity, solidarity and responsibility, it seeks to educate graduates who are not only skilled professionals but also engaged citizens committed to the common good.

The University federates **faculties, schools and institutes** offering programs across a wide range of disciplines. Its approach combines **high-quality education, pedagogical innovation and strong links with industry**, while small class sizes and accessible professors foster a personalized learning environment.

### KEY FIGURES

**43,000** students

**360** degree programs

**23** teaching and training institutions

**A hospital group** and health and social care establishments (nearly **2,000** beds and places in total)

**580+** partner universities on **5** continents

**15** research units





---

Deeply connected to society, the University contributes actively to major contemporary challenges through healthcare, social inclusion, sustainable development, service-learning and research with societal impact. This humanist vision guides a university committed to the common good, where knowledge, solidarity and responsibility shape lasting social impact..

---

International openness is central to the University's mission. With **over 440 academic partnerships across Europe**, strong participation in Erasmus+, and involvement in international networks and alliances such as the **EUNICE European University Alliance**, the *UCLille* actively promotes mobility, collaboration and intercultural dialogue. Through its research initiatives, social engagement programs such as UNIV'R, and projects like ECOPOSS, the *Université Catholique de Lille* contributes to addressing major societal challenges while preparing the **responsible global citizens of tomorrow**.



# Rich history & heritage



Founded in 1875, the *Université Catholique de Lille* has developed a historic campus at the heart of Lille, and is home to emblematic neo-Gothic buildings, including its *Hôtel Académique* and University Chapel. This architectural heritage highlights its **traditional values of knowledge and spirituality** which are at the heart of its identity.

Upon its official opening, the university comprised three faculties: Law, Arts, and Science, soon followed by a Faculty of Medicine and a Faculty of Theology. The first constructions took place in three phases (1879 to 1887, 1886 to 1913, and 1918 to 1927), notably including the university chapel and the first medical facilities. Since then, the University has never stopped developing and diversifying and has now reached **a total of 22 training institutions, 9 health and social care establishments** and welcomes more than 40,000 students on its campuses every year.



The Vauban campus also features an astronomical observatory dating back to 1888, renovated and reopened in 2025, and a botanical garden managed by the Faculty of Medicine - all of which reflect the university's **longstanding commitment to science and public service**.



# Lille, a vibrant city at the heart of Europe



---

With a rich and complex history shaped by various European influences, Lille has grown into a vibrant, modern city known for its creativity, innovation, and quality of life. Today, it is part of a dynamic cross-border metropolitan area of over 2 million people, yet retains a welcoming, **human-scale atmosphere** with under 250,000 residents - nearly half of whom are under 30.

Lille is a **true student city**, easily explored on foot or by bike, and supported by an efficient public transport system including metro, trams, and frequent trains that connect it seamlessly to Paris, Brussels, London, and many other European destinations.

---

Designated **European Capital of Culture in 2004** and **World Design Capital in 2020**, Lille offers year-round cultural experiences: museums, opera, theatres, concerts, and major festivals such as Series Mania and the Lille Piano(s) Festival.

The region is also home to several world-class museums including the **Palais des Beaux-Arts**, **Louvre-Lens**, and **La Piscine in Roubaix**. Most cultural venues offer free or discounted access for students, making Lille an ideal destination for living, learning, and exploring at the heart of Europe.



# Academic offer

Covering a wide range of disciplines, our programs combine **academic excellence, pedagogical innovation and strong professional orientation**, developed in close collaboration with companies, institutions and international partners. This approach enables students to **acquire both solid theoretical foundations and practical skills** aligned with the needs of today's global job market.

From undergraduate to doctoral levels, our institutions offer 360 degree programs in the following areas:

	Faculty of Law (FLD)	ESPOL School of Political Science	Faculty of Management, Economics & Sciences (FGES + EDIN, ISEA)	EDHEC Business School	ESPAS School of Business & Biosciences	ESTICE School of Management	IESEG School of Management	Faculty of Art & Humanities (FLSH)	IJTM School of Journalism	ISTC School of Communication	Faculty of Medicine, Midwifery & Health Sciences (FMMS)	IKPO Institute of Physiotherapy, Podology, & Orthopaedics	ICAM School of Engineering	JUNIA School of Engineering	ESSLIL School of Social Sciences	IFP Teacher Training Institute	Faculty of Theology (FT)	LIDD Design School	PIKTURA Art & Design School	USCHOOL
Law	✓			✓																
Political Science	✓	✓																		
International Relations	✓	✓						✓												
Languages						✓	✓	✓												
Humanities						✓	✓	✓		✓					✓					
Marketing, communication & journalism			✓				✓	✓	✓	✓										
Economics & Accounting			✓	✓	✓		✓													
Business & Management	✓		✓	✓	✓	✓	✓	✓		✓										
Social Care															✓					
Psychology							✓													
Health & Medicine										✓	✓									
Science and Technology			✓		✓									✓						
Engineering													✓	✓						
Digital Science			✓											✓						
Design & Visual Arts																		✓	✓	
Pedagogy							✓									✓				
Theology																	✓			

Multi-disciplinary courses



In addition to a wide array of programs in French, **many programs are available in English** and include international opportunities.

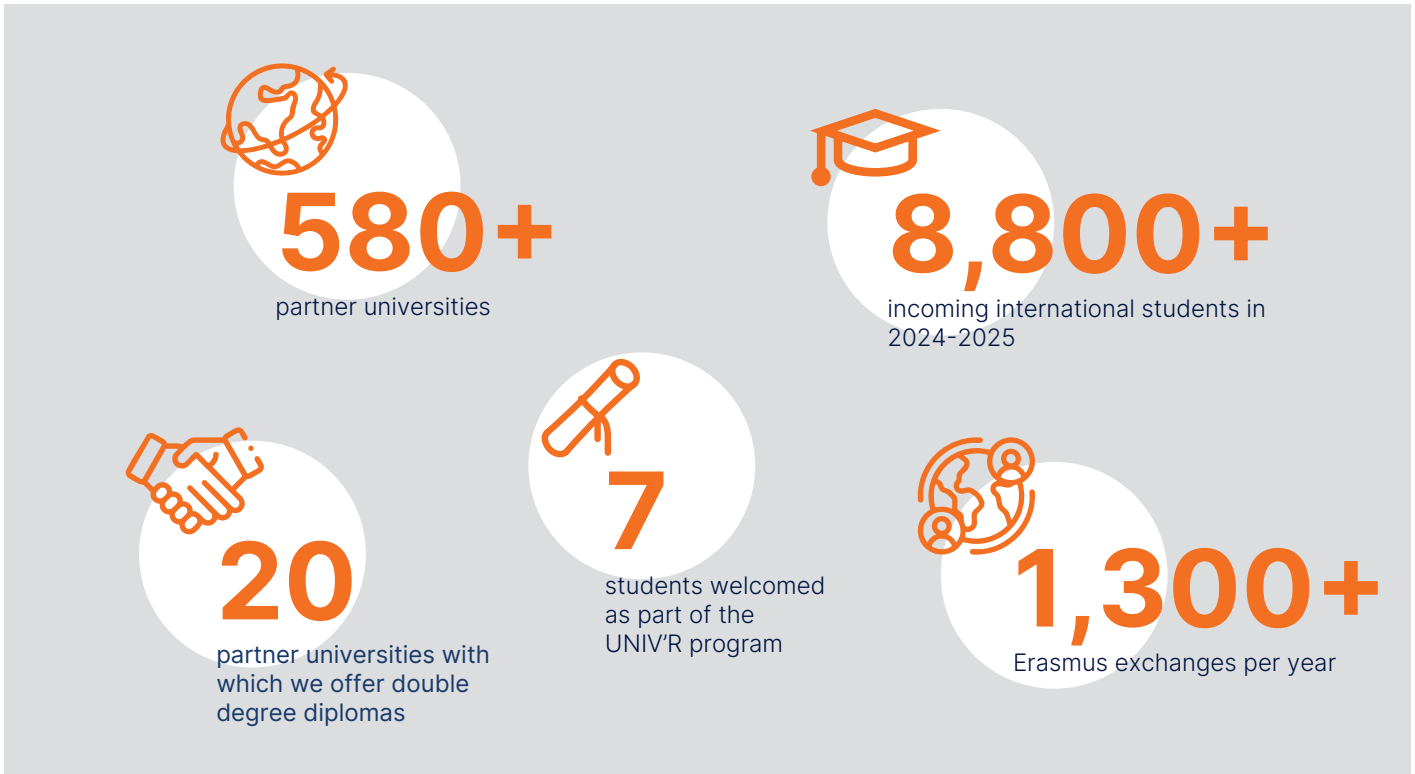


### COMMITTED TO PEDAGOGICAL INNOVATION

Several services foster teaching innovation and digital learning at *Université Catholique de Lille*. This aims at **developing “Online Campus” initiatives** and allows to **work closely with academic departments**.

They support faculties in designing innovative courses, integrating digital tools, and experimenting with emerging teaching practices such as **hybrid learning, immersive pedagogy and generative AI**. They also coordinate the University’s techno-pedagogical platforms and provide resources and workshops to enhance teaching quality.

# International engagement in action



## EUROPEAN COMMITMENT

The *Université Catholique de Lille* is deeply **committed to the European project**, which is reflected in its active participation in major European programs and networks.

The **Erasmus+ program** lies at the heart of this engagement. Ranked among the **top 3 universities in France for Erasmus mobility**, the *UCLille* enables hundreds of students and staff each year to study, train, teach or complete internships across Europe through a network of **over 440 Erasmus+ partners**.

Beyond mobility, the *UCLille* contributes to numerous **European initiatives and collaborative projects**, including **Erasmus+ strategic partnerships and Blended Intensive Programs (BIPs)**, fostering innovation in teaching, research and intercultural cooperation.



## INTERNATIONAL SOLIDARITY

The *Université Catholique de Lille* promotes inclusive access to higher education locally and internationally. Through the UNIV'R program and in partnership with AUF, it supports refugee and displaced students with guidance, language training, and integration into degree programs.

The University also runs **international cooperation scholarships**, enabling professors and researchers from partner countries - especially in Africa and Haiti - to train or conduct research in Lille, then return home to strengthen local education and development.

In partnership with NGOs, international organisations, academic networks, and **France Volontaires**, students gain volunteering and community engagement opportunities abroad, fostering intercultural dialogue and global responsibility.



### AN ACTOR IN SEVERAL NETWORKS

The *Université Catholique de Lille* is part of both major **local and global academic networks**, promoting collaborative research and student mobility, which aims to strengthen its academic partnerships and research collaborations around the world to offer students and staff enriching opportunities for exchange and cooperation.

The *UCLille* is also strongly connected to networks promoting shared academic values, including the **International Federation of Catholic Universities** and the **Federation of European Catholic Universities**, which encourage collaboration between Catholic institutions worldwide.

The University is part of major global and European organisations such as the **International Association of Universities**, created with the support of UNESCO to promote worldwide cooperation between universities, and the **European University Association**, which brings together more than 850 institutions across Europe to shape the future of higher education and research policies.



In addition, the University contributes to global academic cooperation through the **Agence Universitaire de la Francophonie**, a network of more than 1,000 universities promoting scientific cooperation in French-speaking countries.



The University's strong European commitment is further reinforced through its participation as an associate member of the **EUNICE European University alliance**. This alliance brings together universities across Europe to develop innovative teaching models, joint programs, collaborative research, and enhanced mobility opportunities, while promoting multilingualism, intercultural dialogue, and European values.



Together, these networks allow us to expand collaboration opportunities and contribute to building a dynamic global academic community.



# Committed to society and the common good

At the *Université Catholique de Lille*, education combines knowledge with responsibility, care, and civic engagement. Our approach emphasizes **sustainable development**, the wellbeing of individuals and communities, and **whole-person education**. Through many initiatives, students develop ethical, cultural, and social awareness, preparing them to contribute meaningfully to a more inclusive and sustainable future.



## SUSTAINABLE DEVELOPMENT

Guided by *Laudato si'*, integral ecology and the University's strategic foresight, **Live TREE** promotes a systemic transition approach involving its entire ecosystem: students, staff, citizens, associations, and institutional and economic partners. For over ten years, the University has strengthened its role in global education and social responsibility through initiatives in biodiversity, pedagogy, mobility and energy. Its ambition is to build a resilient university, aligned with planetary boundaries, committed to social justice, and able to make transition inspiring, meaningful and positively impactful for society, the planet and living systems.

This commitment also extends to international mobility. The University encourages **more sustainable travel choices** by offering additional support, helping students and staff opt for greener modes of transport when participating in international exchanges.

In parallel, the University contributes to education for sustainable development through innovative learning tools such as the **Oddysée MOOC**, which raises awareness of the **United Nations Sustainable Development Goals (SDGs)** and encourages students to engage actively with global environmental and social challenges.

### TAKING CARE

Care for people and social responsibility are central to the mission of the *Université Catholique de Lille*. Through a strong ecosystem combining healthcare, education and social innovation, the University works to support the most vulnerable at every stage of life.

A key pillar of this commitment is the **Groupe Hospitalier de l'Institut Catholique de Lille (GHICL)**, one of the largest private non-profit hospital groups in France, closely connected to the University's programs in health sciences, training and research.

This commitment is also reflected in initiatives such as **Humanité**, an innovative neighbourhood bringing together healthcare institutions, social services, housing and community life to promote inclusion and new forms of solidarity.

The **Centre Feron-Vrau**, which manages several nursing homes (EHPAD) and support services for the elderly, and the **Institut Étienne Leclercq**, which hosts a DITEP supporting children and adolescents with behavioural and psychological difficulties, further illustrate the University's dedication to **caring for the most vulnerable and fostering a more inclusive society**.





### WHOLE-PERSON EDUCATION

Service learning is at the heart of the University's educational experience, **linking academic knowledge with meaningful community engagement**. Through projects carried out with local, national, and international partners, students apply what they learn in the classroom to real-world challenges while developing a sense of responsibility and solidarity. It **encourages students to grow as professionals and as citizens**, combining intellectual development with human and ethical values.

The *Bus du Droit*, a flagship project of the Faculty of Law, is a concrete example of this commitment. By bringing free legal information and guidance directly to local communities, law students - under the supervision of professors and legal professionals - gain valuable practical experience while promoting access to justice and civic responsibility.

### THE HUMANITIES PROGRAM

Since 2020, the *Université Catholique de Lille* has offered its 43,000 students a **transdisciplinary, open-access programme** called the "*Humanités*". Through different modules, this program sharpens critical thinking, nurtures creativity, and encourages open dialogue - skills that are valuable not only for academic success but also for thriving in a wide range of careers and life experiences. Rooted in the Christian humanist tradition, this bilingual (French-English) program develops students in all dimensions. From 2026, a new module will prepare students for **international volunteering**.

The *Humanités* also integrate **Service-Learning** through the UNISERVITATE network, allowing students to engage in practical solidarity projects abroad, serving vulnerable communities. The program concludes with a major oral presentation, leading to a university diploma.

# Research addressing global challenges

**850**

teachers-researchers, university  
hospital researchers

**220**

PhD students

**12**

research units and institutes  
(including 2 with the CNRS)

**15**

installed research chairs

**17**

platforms and resources for research

At the *Université Catholique de Lille*, research efforts combine **academic excellence, societal impact, and international openness**. Through this ecosystem, the university develops impactful research while enriching its academic programs and international collaborations.

## SHAPING THE FUTURE THROUGH RESEARCH

Research at the *Université Catholique de Lille* is built around 4 interdisciplinary themes that confront today's global challenges, placing the human experience at the forefront:

- **Ethics and Integral Ecology** - ethical responses to technological and environmental change.
- **Vulnerabilities and Fragilities** - human dignity across issues such as health, dependency and social injustice.
- **Risks and Geopolitics** - emerging global risks and regulatory frameworks.
- **Contemporary Social Transformations** - societal shifts shaped by digital and algorithmic developments.

Together, these priorities reflect our commitment to multidisciplinary, ethically grounded and future-oriented research.



### A WIDE RANGE OF DISCIPLINES

Research is organized around recognized research units and labs covering a wide range of disciplines:

- Sustainable finance, economics and risk management
- Artificial intelligence, data science and emerging technologies
- Energy systems, engineering and sustainable infrastructure
- Microelectronics, nanotechnologies and advanced materials
- Biotechnologies, agroecology and environmental transitions
- Law, governance, geopolitics and international relations
- Media, communication and digital
- Ethics, humanities, theology and societal transformations
- Health, care and human vulnerabilities

### SUPPORTING SCIENTIFIC MOBILITY

Research at the *Université Catholique de Lille* extends far beyond the regional level and contributes to a strong **national and international presence**. Through an ambitious research policy that supports scientific excellence and emerging talents, the University fosters international collaborations, mobility opportunities and participation in major European and global research networks.

As part of its strategy in the upcoming years, the *UCLille* is strengthening its commitment to international research, notably through the SMOS (Scientific Mobility Support) program. By supporting both incoming and outgoing researcher mobility, the initiative fosters transversal partnerships, encourages collaboration in strategic fields such as AI and geopolitics, and contributes to the development of ambitious, European-scale research projects.



# An inspiring campus environment

Student life and community life are central to the university experience. Our campuses are much more than places of academic learning; they are **dynamic, inclusive spaces where students can thrive, connect and grow together**. With a multitude of associations every student has the opportunity **to get involved and contribute to the university community**.

While combining architectural heritage, green spaces and modern facilities, the University offers a wide range of **student services at the heart of its campuses**:

**2 000**

rooms in 20+ student dorms on and around the campuses

**7**

university restaurants & sandwich shops

**1**

University Multi-Service Health Center

**1**

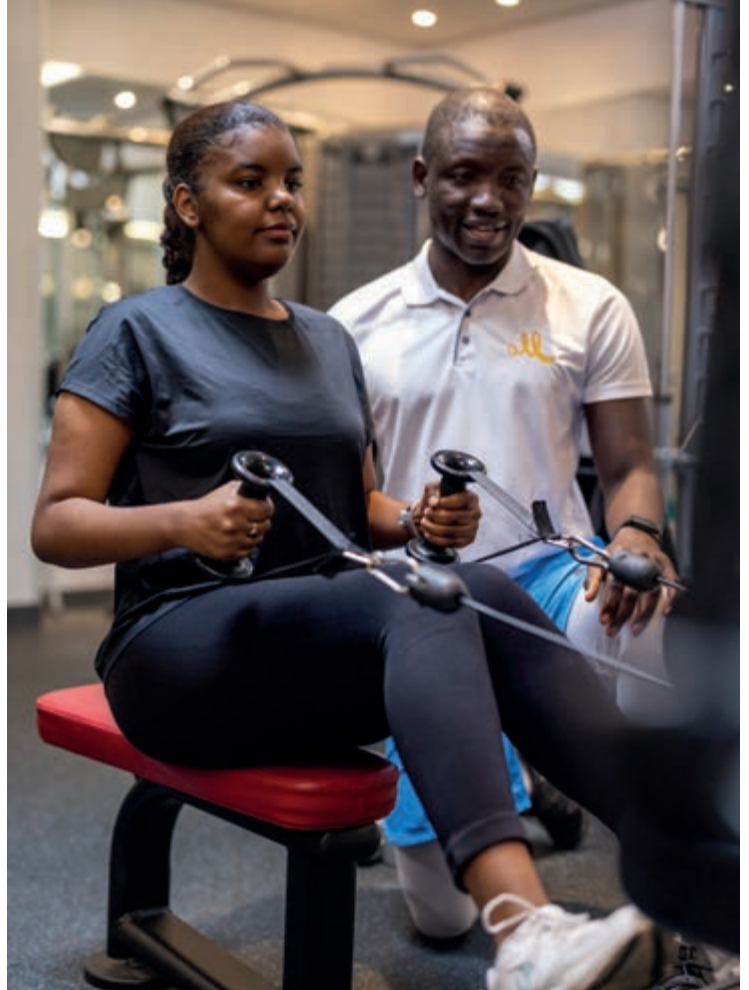
fitness club on campus and several sport activities and clubs

**500+**

student associations

**1**

third place dedicated to arts and creative projects





### A COMPREHENSIVE STUDENT SUPPORT SYSTEM

Students benefit from tailored support throughout their academic journey. From academic advising and career support to personal counselling and integration services, **individual accompaniment is at the heart of our educational approach.** Our teaching approach is based on **small class sizes and accessible professors**, fostering close interaction, personalized support and an engaging learning environment.

The University has also developed a dedicated **multi-services health center**, providing medical consultations, prevention services and wellbeing support on campus.

### LEARNING BEYOND THE CLASSROOM

The **Campus Créatif** encourages innovation, artistic expression and interdisciplinary collaboration through workshops, events and creative spaces open to all students.

The **University Library** offers modern study areas, extensive digital and physical collections, and research support services adapted to international standards.

Through Service-Learning programs, students combine academic coursework with community engagement, reinforcing social responsibility and practical experience.

At the *Université Catholique de Lille*, campus life reflects our commitment to educating responsible, engaged and fulfilled global citizens.

### STUDENT HOUSING

The *UCLille* **owns and manages its own student residences**, offering a wide range of dormitories and fully equipped rooms located close to academic buildings. This direct ownership guarantees quality standards, affordability, security and personalized support. International and French students benefit from a safe and welcoming living environment designed to foster community life. Many housing options outside of campus are also available.





**Université  
Catholique  
de Lille** 1875

**International Relations Office**

60 boulevard Vauban  
CS 40109 - 59016 Lille Cedex - France  
Tel. +33 (0)3 59 30 25 39  
international@univ-catholille.fr

---

[www.univ-catholille.fr/en](http://www.univ-catholille.fr/en)



---

INSTITUT CATHOLIQUE DE LILLE (ICL), ASSOCIATION 1875 RECONNUE D'UTILITE PUBLIQUE  
ET ETABLISSEMENT D'ENSEIGNEMENT SUPERIEUR PRIVE D'INTERET GENERAL (EESPIG)  
60 BOULEVARD VAUBAN • CS 40109 • 59016 LILLE CEDEX • FRANCE • SIRET 775 624 240 000 13 • CODE APE 8542 Z  
N° TVA Intracommunautaire FR 66 775 624 240 • Organisme de formation, enregistré sous le n°31 59 00468 59  
Cet enregistrement ne vaut pas agrément de l'état.

