



UNIVERSITÉ
CATHOLIQUE
DE LILLE 1875

Learn
In
Lille
Live
Europe **lille**



European Summer Program

Since 2001

27 MAY
25 JUNE
2022

29 JUNE
27 JULY
2022

Contents

Page 4

Université Catholique de Lille

Page 6

LILLE Programs

Page 8

European Summer Program

Page 9

Course catalogue

Page 14

UCLille commitment
to sustainable development

Page 15

Online programs

Page 16

Program package

Page 18

Fieldtrips

Page 20

Lille, a city of art,
culture, and history

Page 22

Join us in Lille!

Page 23

Keep in touch



Welcome!

Bonjour & bienvenue...

*... to France's leading private (not for profit) university,
the Université Catholique de Lille, and to LILLE!*

Home to the *Université Catholique de Lille* since 1875, Lille is a vibrant and dynamic university city at the centre of Western Europe. With swift connections to Brussels (35 minutes), Paris (60 minutes), and London (80 minutes), Lille is perfect for students planning to visit and study Europe. And there is always much to see and do in Lille itself – a welcoming multicultural haven.

We are proud of our growing network of over 540 partner universities, and are happy to welcome students from all over the world, all year round, as part of our efforts to promote peace, education, cultural awareness, and sustainable development – taking care of one another and of the world we live in.

We want you to be part of those efforts. Seize the opportunity to join us here for an excellent, integrated, and convivial academic program offering a life-changing cultural experience – come to LILLE: “Learn In Lille, Live Europe”!

À très bientôt! See you soon!



Patrick SCAUFLAIRE
*President Rector
Université Catholique de Lille*



Anne-Marie MICHEL
*Director
International Relations Office*

Université Catholique de Lille



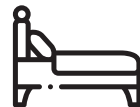
Founded in 1875, and now one of the major higher education institutions in France, the *Université Catholique de Lille* is strongly committed to the development of the region, and to laying the groundwork for the Third Industrial Revolution, through active collaboration both with local authorities and with the business sector. Its teaching departments and research teams combine multidisciplinary expertise and innovative new teaching methods aimed at enhancing the educational experience through cooperative learning and more.



38,500
students



200+
student associations



1,500
student dorm rooms



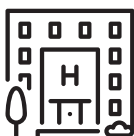
5,000+
international students
on campus



700
research and
teaching faculty



15
research chairs



8
health care
institutions



Rated the **2nd**
most beautiful campus
in France



15 minute
walk from campus to
the historic city centre

The *Université Catholique de Lille* is **France's largest private, not-for-profit university**, with over 38,000 students and 5,000 staff members. "La Catho" is home to **5 faculties, 20 schools** (including two triple-crown awarded business schools and industry-leading engineering schools), multiple institutes, and a renowned hospital group, and offers **more than 270 distinct degree programs** in several centres of excellence, including:

- > Law, Economics, Business, & Management
- > Innovation and Design Thinking
- > Science and Technologies
- > Health and Social Care
- > Arts, Humanities, Theology, Ethics, & Education



The *Université Catholique de Lille* has undergone profound changes over the past decade in order to become an internationally renowned "Third Place" for the reinvention of society and of **a more sustainable, more ethical future**, combining innovative research and pedagogy across its faculties, *grandes écoles*, and healthcare sector, along with varied ecosystems, demonstrator buildings, and experimental urban neighbourhoods. Our efforts and innovations in these areas will continue and indeed intensify over the coming years. In the meantime we are also focused on:

- **offering students a true life experience:** A global vision of the person demands that we enable students to engage in **a full range of intellectual, physical, relational, and spiritual activities**, not merely scientific and intellectual training.
- **"taking care":** The University is already heavily invested in the idea of taking care of others – of the sick and elderly and of the most disadvantaged in society, both locally and internationally – but we believe that "taking care" should in its broadest sense extend across all disciplines and all three University missions: training, research, and service to society.

Working together, combining our efforts, desires, ideas, commitments, and achievements, we will be able to make a visible, understandable, and meaningful contribution to **a world in transition**.

LILLE Programs



LILLE – “Learn In Lille, Live Europe” – combines a variety of innovative, student-centred academic programs at the *Université Catholique de Lille*, tailored to suit different academic needs and schedules, and to provide a welcoming environment and an excellent study/life balance.



WHAT DOES LILLE MEAN TO YOU?

- A wide array of intercultural and interactive course offerings
- Programs ranging from 2 to 4 weeks
- Courses taught in English or French
- Small international classes
- Cultural and curriculum-related fieldtrips
- Full package program (accommodation, academic & extra-curricular activities, 24/7 support)
- Experienced and dedicated international faculty and staff

Flash to discover the **LILLE** experience in video!



LILLE European Summer Program:

ESP1 - 27 May > 25 June 2022
ESP2 - 29 June > 27 July 2022

LILLE Winter (customizable):

January - February

LILLE Spring (customizable):

April - May

LILLE Semester Immersion Programs & LILLE Faculty Led Programs



Contact us for more information!



Think outside the box – study outside the classroom!

Most LILLE courses involve visits to emblematic and pertinent local and regional sites.



LILLE Winter

Modeled after our popular LILLE European Summer Program

- **2-week program:** 7 January to 21 January 2022
- **3-week program:** 11 January to 28 January 2022
- Program includes courses in business and communication, engineering and sustainable development, foreign language, and art history
- Cultural program complete with international events on campus and field-trips throughout Lille and the region.



LILLE Spring

Fully customized programs between 2 to 4 weeks

- Ideal for spring break faculty-led programs
- Courses available in many study areas such as business & communication, liberal arts, engineering, political science & law, and more
- Cultural program and field trips always included in our LILLE Programs



Contact us for more information!



LILLE Semester Immersion Programs & LILLE Faculty Led Programs

The Université Catholique de Lille operates several **customized semester immersion opportunities**. These fee-based programs allow partners to send their students to UCLille without the traditional exchange agreement/balance in place. The immersion programs have a strong focus on French language and culture and can include French tutoring, service learning in the community, and guided cultural excursions. From start to finish these programs are operated entirely in French.

The University is open to developing customized faculty-led programs on campus. Please contact the International Relations Office for more information on developing a customized immersion program: lilleprograms@univ-catholille.fr



LILLE European Summer Program



The LILLE European Summer Program (ESP) is composed of **two month-long program sessions** (June and July). Students are welcome to attend one or both sessions.

Students can choose from a large variety of electives. The programs offer academic courses **taught in English or in French**, utilizing the University's expertise in Humanities, Social Sciences, Management, and more.

Courses are taught by highly-qualified faculty from the *Université Catholique de Lille* or visiting professors, with an aim to **provide both theoretical background and practical learning through site visits and hands-on activities**.

The ESP offers a wide range of courses in the following areas:

Liberal Arts, Business & Communication, Health, European Studies, Sustainability & the Sciences, French Language

90

contact hours*

*1 contact hour
= 60 minutes



12

ECTS credits

=

6

North American Credits

All courses fulfill ECTS (European Credit Transfer System) standards and detailed transcripts are available for credit transfer to your own degree program.



2,500+

students welcomed
since 2001



130

supporting
universities



96%

recommend
the program



Course Catalogue



Students can customize their program by choosing from a large variety of courses representing the multidisciplinary of our University. For detailed information about the courses, **make sure to check the syllabi on our website.**

CREATE YOUR OWN PROGRAM!

Morning class 9am - 12pm

Pick one elective
in English or in French

48 to 51 hours
6 ECTS credits



Afternoon class 1pm - 4pm

Pick one elective
in English or in French

39 hours
6 ECTS credits



87 to 90
contact hours

12
ECTS credits*

** 6 North American credits*



LILLE Programs reserves the right to cancel or alter its offerings as circumstances demand (including enrolments and legal restrictions). Partner universities and students will be contacted as soon as possible with the latest relevant information as necessary.

MORNING ELECTIVES



Intercultural Communication*

Contact Hours: 9 | French or English | ESP1&2

This interactive course will provide students with an overview of different intercultural concepts to communicate effectively in different cultural situations.

**All ESP students will participate in a 9-hour module on Intercultural Communication, which is an integral part in the success and understanding of international study abroad during our LILLE Programs*



French Language & Culture*

Contact Hours: 42 | French | ESP1&2

This course covers reading and listening comprehension, written and oral expression, and vocabulary and grammar at varied levels, through practical written and oral work, discussions, presentations and debates, role-play, and writing short essays and summaries.

**An initial placement activity will sort students from beginner to advanced levels*

JUNIA ISEN

Project Management for Everyone

Contact Hours: 39 | English | ESP1&2

This highly interactive course will provide students with methodological and practical tools to manage projects in fields ranging from engineering and science to management and communication.

JUNIA ISA

Understanding Challenges of Climate Change*

Contact Hours: 39 | French and English | ESP1

The objective of this course is to better understand the causes and consequences of climate change, as well as to look into the adaptation and mitigation strategies focusing on French and European examples.

**This course will include 18 hours of French language instruction as well as 21 hours concerning climate change*



AFTERNOON ELECTIVES

LIBERAL ARTS



World Class Museums

Contact Hours: 39 | English | ESP1&2

An introduction to art and art history through an overview of the cultural heritage and museums of the Lille region in the heart of Europe. Many class sessions will take place within the museums themselves.



Introduction to French Cinema

Contact Hours: 39 | English | ESP1

An overview of French cinema and the art of cinema more generally, examining various ways of 'reading' a film while viewing representative works from different periods of French cinematic history, with a special emphasis on the region of northern France.



Introduction to Art and Cinema

Contact Hours: 39 | English | ESP2

An overview of French art and cinema and the study of visual cultures more generally, examining various ways of 'reading' a piece of art - whether a painting, a photograph, or a film - from different periods of French and regional history, both in class and through visits to various local and regional art museums.



Introduction to French & Francophone Women Writers

Contact Hours: 39 | English | ESP1

An overview of the literary representation of gendered experiences in personal stories authored by a range of leading contemporary female French-speaking writers.



Understanding Contemporary France

Contact Hours: 39 | English | ESP1&2

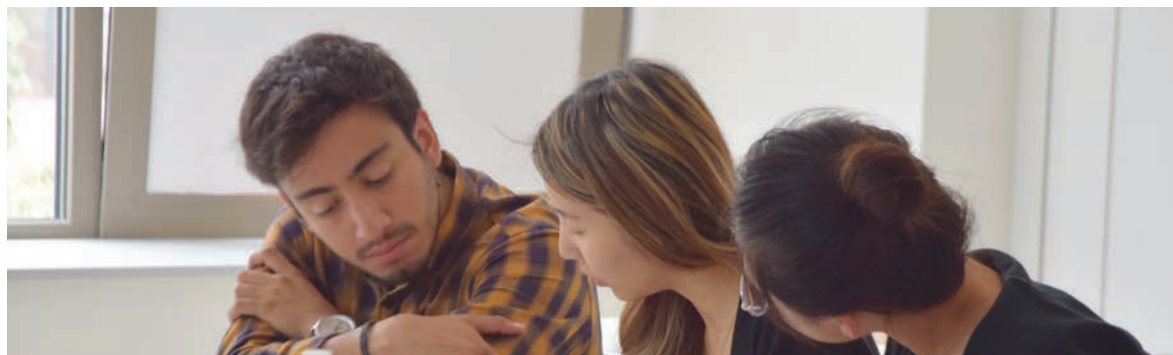
An introduction to French culture and society through discussion and analysis of varied audio, video, and written works.



Techniques of Traditional Cartoon and Digital Animation

Contact Hours: 39 | English | ESP2

A practical and theoretical introduction to drawing anatomy, drawing for animation, traditional animation, digital animation, and TV paint software, in a new state of the art facility in neighboring Roubaix (easily accessible by public transport).



BUSINESS & COMMUNICATION



Corporate Social Responsibility & Sustainable Development

Contact Hours: 39 | English | ESP1&2

This course provides students with a concrete approach towards sustainable societies in a swiftly changing world, based around specific business case studies, and is intended to be as practical and interactive as possible.



Corporate Culture, Human Resources & Innovation

Contact Hours: 39 | English | ESP1&2

An overview of the role of Human Resources as a strategic and innovative business partner, the influence of Corporate Culture on an organization's agility, and the promotion of innovation, diversity, and well-being.



International Teamwork & Communication

Contact Hours: 39 | English | ESP1&2

A theoretical and practical introduction to a wide range of issues concerning teamwork and communication in an international and intercultural environment.



International Marketing

Contact Hours: 39 | English | ESP1

An introduction to international marketing and the role it plays in corporate strategy and contemporary economic contexts in today's global environment with its highly varied markets.



International Marketing & Communication

Contact Hours: 39 | English | ESP2

An overview of international marketing and the challenges of communication in a globalized world. Students will examine and analyze contemporary advertising campaign strategies.

POLITICAL SCIENCE & LAW



European Union Policy Making

Contact Hours: 39 | English | ESP1&2

An overview of the European Union, its policies and interactions with Member States, and the varied economic, social, and environmental problems it is facing. This course includes a visit to the interactive Parliamentarium in Brussels.



Introduction to European Studies: History, Politics, and Society

Contact Hours: 39 | English | ESP2

A broad overview of current and classical themes of European integration in relation to current challenges faced by the EU and Member States and their interactions with the rest of the world. This course includes a visit to the interactive Parliamentarium in Brussels.



France & the USA: Political Culture & Conflict

Contact Hours: 39 | English | ESP1

France and the United States share many values, aspirations, and experiences, yet remain fundamentally different. This course explores the political cultures, values, and histories of both countries in order to better understand current conflicts and controversies.

TAUGHT IN FRENCH



Communication Française (minimum A2+)

Contact Hours: 39 | French | ESP1&2

This course aims to advance student skills and knowledge in relation to the French language of gesture, idioms, expressions of opinion, judgement, and agreement/disagreement, in a variety of cultural and social situations.



Représentations du Nord et de la Belgique dans le cinéma franco-belge (minimum B2+)

Contact Hours: 39 | French | ESP1

An overview of French and Belgian film cultures, film vocabulary, formal film analysis, and film theory, across period and genre, and through a variety of critical lenses.

HEALTH STUDIES



Healthcare Systems: a Comparative Approach

Contact Hours: 39 | English | ESP1

An introduction to different healthcare systems in Europe and the USA, through a comparative approach to how different countries tackle current health care challenges. This course includes visits to French hospitals and care centers.



Health: a Common Good

Contact Hours: 39 | English | ESP2

This course examines how health needs are understood and addressed in our societies in relation to various disciplines, including sociology, anthropology, economics, and more, in order to help nourish critical thinking regarding the place of health in our home societies.



SUSTAINABILITY & THE SCIENCES



Sustainable Cities

Contact Hours: 39 | English | ESP1&2

A theoretical and practical examination of the sustainability issues faced by cities globally, to discover sustainability-related solutions and even imagine new ones, through study visits and meetings with professionals, and through an innovation process including creativity sessions and prototyping activities.



Renewable Energies: a Focus on Solar Energy

Contact Hours: 39 | English | ESP1

An introduction to renewable energies with an emphasis on solar energy technologies. This course is not only theoretical but also practical, offering students an opportunity to construct their own solar-powered devices.



Current Practices in Renewable Energy

Contact Hours: 39 | English | ESP1

An introduction to the fundamentals of energy and an overview of renewable energies and their applications, including solar, wind, biomass, and other sources, here on campus and further afield.

Brewing Technology and Marketing: the Nordist Expertise

Contact Hours: 39 | English | ESP1

For centuries, the North of France has been renowned for its brewing industry. This course offers a global approach to brewing technology, marketing, and sales through local case studies, site visits, and active learning. Students will have the opportunity to brew their own beer in the JUNIA ISA micro-brewery.

Fashion, Textiles, & Sustainability

Contact Hours: 39 | English | ESP2

An overview of the global fashion industry, focusing on production and distribution value chains and their associated externalities at the local and global level, and an examination of sustainability initiatives of fashion companies to create more responsible business models, within both the US and Europe, and in the Lille region more specifically.

UCLille Commitment to Sustainable Development

Since 2014 and the launch of the Third Industrial Revolution, the *Université Catholique de Lille* has been a forceful participant in regional dynamics concerning energy through its Live TREE project, developing a systemic approach to the varied issues, particularly on its Lille campus, which is expected to be carbon neutral by 2030.



One of the first major renovation projects transformed the “Rizomm” into a smart building, with energy efficiency, optimization of heating-ventilation systems, instrumentation including nearly 1500 sensors, photovoltaic production involving 1200m² of solar panels on the roof, and much more. Those installations have since been supplemented with others at the ICAM and JUNIA HEI schools of engineering as well as on the main academic building itself, creating a “multi-source local renewable energy” environment. The campus has also equipped itself with numerous charging stations to power its new fleet of electric vehicles, and has made electric bicycles available. Other projects include initiatives around urban biodiversity, such as green walls, composters, nesting boxes, and more. All of this generates a wealth of relevant data for our centralized research platform. Analysis is carried out using recommendation systems – artificial

intelligence – in order to better direct the flow of energy, towards self-sufficiency, new services, or storage systems for later use.

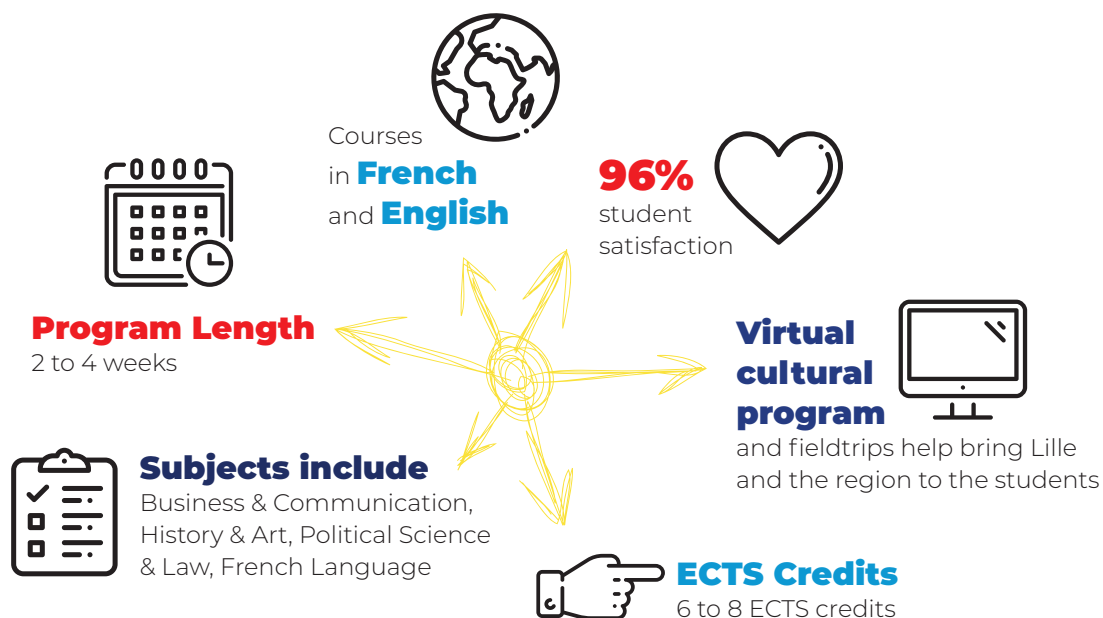


In these and other ways, Live TREE and the *Université Catholique de Lille* strive to build a better, more ethical future for us all.

Learn more at: www.livetree.fr

Online Programs

Building upon the success and student satisfaction rate of the previous online summer sessions, the LILLE programs will offer a LILLE Winter and a LILLE ESP completely online for those students who cannot join us in person.



Visit our website for more detailed program information

Program Package

Hospitality



- Accommodation in individual rooms in secure and private student residences, which are easily accessible to campus by walking or public transit
- Meal pass for use at the university restaurant during opening hours (50€ on card, can be recharged online at the student's expense).
- 5 group dinners throughout the program
- Public transportation pass for all public transit systems in the Lille Metropolitan area
- Access to university facilities

Orientation



- Pick-up at train station on arrival day, campus tour, welcome brunch, ice-breaking activity, detailed program information session
- Student support available 24/7

Culture & Fieldtrips*



- Guided visit of Lille
- Day trips to historic and important French & Belgian cities with guided visits
- Cultural activities
- Movie nights
- Group dinners

**subject to change*

Academic



- Tuition fees & materials
- Official transcript for credit transfer

Program Fees



2,995€

10% discount for partner universities and for students attending both sessions

Application deadlines



ESP1 (27 May – 25 June 2022)

Registration deadline: 1 April 2022

ESP2 (29 June – 27 July 2022)

Registration deadline: 1 May 2022

 See website for further details

STAYING HEALTHY

The Université Catholique de Lille is committed to **maintaining a safe and healthy environment** for our students, faculty, and staff. We follow a strict health and safety protocol recommended by the French government regarding Covid-19.

Given the uncertainty of the global health crisis, it is important to note that **changes are possible** before and/or during ESP 2022. Fortunately the current organization of the university and **more than 20 years experience operating** the LILLE Programs allows us to be well prepared:

- Small class sizes for social distancing
- Modern connected classrooms / hybrid online learning solutions
- Student residences on or near campus
- LILLE team available for 24/7 emergency contact / day-to-day student support
- Medical center on campus / university owned private teaching hospitals
- Sanitary kit on arrival (washable mask, disinfecting gel, instructions on campus sanitary protocol)



For the latest COVID-19 information as it relates to the *Université Catholique de Lille* and our LILLE Programs, please visit our webpage at:

www.univ-catholille.fr/en/actualite/communication-covid19

Flash to see our video about the health and safety protocol at the University



Fieldtrips

INCLUDED FIELDTRIPS*

Various fieldtrips are included in the cost of the European Summer Program, in order to give students an opportunity to visit places in the Euro-region with historical or cultural significance and relevance to courses offered.



**Fieldtrips are subject to change*

OPTIONAL FIELDTRIPS*

We want students to make the most of their time in Lille, and have designed a series of additional fieldtrips and extra-curricular activities that will take them to some of the most emblematic cultural and historic sites in France and Europe. Planned dates (subject to change) are available on the ESP website.

Spots are limited!

WEEKENDS



PARIS +250€

Guided sightseeing visit of Paris, the French capital and "City of Romance"

What's included: transportation, 1 night in a hotel in a central location, breakfast, boat cruise on the Seine, access to public transportation



NORMANDY +250€

Medieval architecture and WW2 memorials on the scenic coast of Normandy

What's included: transportation, Mont-Saint-Michel, D-Day beaches, port city of Honfleur and Caen, 1 night in a hotel, breakfast and dinner




AMSTERDAM +250€

Visit Amsterdam, the multicultural capital of the Netherlands

What's included: transportation, 1 night in a hostel with breakfast, 1 lunch, Anne Frank house, access to public transportation (ESP2)

DAYTRIPS



WORLD WAR I SITES +75€

Trenches, battlefields, memorials on the Western Front.

- Arras, Vimy, and Notre Dame de Lorette (ESP1)
- Fromelles and Ypres (ESP2)

What's included: transportation, dinner, and museum admission fees



AMIENS +50€

Visit Amiens and its medieval cathedral.

What's included: transportation and optional guided tour



NAUSICAÀ +75€

Visit the largest aquarium in Europe!

What's included: transportation, lunch, and admission fees

**Fieldtrips are subject to change*

LILLE

a city of Art, Culture, and History



A RICH HISTORY AT THE CROSSROADS OF EUROPE



Founded in 1066 by the Count of Flanders, Lille – *Rijsel* in Flemish – became an important trading and stock market point on the route between the rich Flemish towns and the Champagne fairs. As evident from some of its architecture, Lille was successively Flemish, Burgundian, and Spanish before finally becoming French in 1667 under Louis XIV, whose military engineer, Vauban, built Lille's impressive Citadel.

Yet the city has never stopped reinventing itself through successive economic, social, and power shifts. Lille's strategic location and the area's rich resources have made it one of the most fought over regions in Europe, a history visible today particularly through the numerous memorials from the last two World Wars in the region, toured by national and international visitors each year.



BIG CITY ADVANTAGES WITH SMALL CITY ATMOSPHERE



Lille enjoys all of the conveniences of being at the centre of a cross-border urban zone with a population of over 2 million, yet remains a “human-sized” university city with under 250,000 inhabitants, nearly half of whom are under age 30! Visitors can get around easily on foot or by bicycle. Public transport also offers the metro, the tramway, and many bus lines running frequently and late into the night, not to mention convenient train connections to the rest of the region and indeed Europe as a whole.



CITY OF ART & CULTURE



Since its designation as a European Capital of Culture in 2004, Lille Métropole has sponsored themed arts festivals with specific international connections every few years. The city was also designated a World Design Capital in 2020. But the arts are on display all year, every year. Lille boasts a significant number of theatres, concert venues, movie theatres, an opera house, and a national orchestra. Annual cultural events include, among many others, the Lille Piano(s) Festival, International Independent Movie Week, the international "Series Mania" festival, the Wazemmes accordion festival, and the "Fête de

la Musique" (country-wide) on 21 June with free concerts all over town.

And then there are all the world-renowned museums in the region, which include the centrally-located Palais des Beaux-Arts (boasting the largest art collection in France outside of Paris), the Louvre-Lens (a nearby outpost of the Louvre itself), La Piscine in Roubaix (built in a former art deco swimming pool), and a modern art museum with a unique collection. Most museums are free or have reduced rates for students.



MORE DYNAMIC THAN EVER



Join us in Lille!



The *Université Catholique de Lille* looks forward to welcoming you to France, to Lille, and to our university campus.

IMPORTANT REGISTRATION INFORMATION



ESP1 (27 May – 25 June 2022)

Registration deadline: 1 April 2022

ESP2 (29 June – 27 July 2022)

Registration deadline: 1 May 2022

→ Applications open: February 2022



COST OF THE PROGRAM



2,995€ including:

1,400€

Tuition fees:

tuition fees and course materials

1,295€

Hospitality package:

accommodation in student dorms, meal pass for use in the cafeteria with a 50€ credit, an orientation program, monthly pass for use on Lille transportation system, access to university facilities, fieldtrips to Bruges and Brussels, 5 group dinners, cultural and social activities, and more!

300€

Administration fees:

normally non-refundable after registration

10% discount

for partner universities and for students attending both sessions



Health and Travel insurance coverage is mandatory to study in France. Students under 25 can subscribe to ESP coverage through the Université Catholique de Lille (+75€).

Keep in touch

NEWSLETTER «GREETINGS FROM LILLE!»

Contact us in order to subscribe to our monthly newsletter! It includes all the latest information about our LILLE Programs, international life on campus, cultural activities in Lille, and much more.

VIRTUAL STUDY ABROAD FAIRS

The *Université Catholique de Lille* regularly participates in virtual study abroad fairs with our international partners.

If your university is planning to offer a virtual study abroad fair to your students, please contact us, as we would be happy to participate by sending a prerecorded video or joining a live video webinar whenever possible!

We can also send any necessary program documentation electronically or via international mail.



Social media & contact



[lilleprograms](#)



[@lilleprograms](#)



[LILLE Programs](#)



[lilleprograms](#)
[@univ-catholille.fr](#)



UNIVERSITÉ
CATHOLIQUE
DE LILLE 1875



60 boulevard Vauban
CS 40109 - 59016 Lille Cedex - France
Tel. +33 (0)3 59 30 25 39
lilleprograms@univ-catholille.fr

www.univ-catholille.fr/en/lille-esp

